

Winter fog experiment over the Indo-Gangetic plains of India

Sachin D. Ghude^{1,*}, G. S. Bhat², Thara Prabhakaran¹, R. K. Jenamani³, D. M. Chate¹, P. D. Safai¹, A. K. Karipot⁴, M. Konwar¹, Prakash Pithani¹, V. Sinha⁵, P. S. P. Rao¹, S. A. Dixit¹, S. Tiwari¹, K. Todekar¹, S. Varpe¹, A. K. Srivastava¹, D. S. Bisht¹, P. Murugavel¹, Kaushar Ali, Usha Mina⁶, M. Dharua¹, J. Rao¹, B. Padmakumari¹, A. Hazra¹, N. Nigam³, U. Shende³, D. M. Lal¹, B. P. Chandra⁵, A. K. Mishra⁵, A. Kumar⁵, H. Hakkim⁵, H. Pawar⁵, P. Acharja¹, Rachana Kulkarni¹, C. Subharthi¹, B. Balaji¹, M. Varghese¹, S. Bera¹ and M. Rajeevan⁷

¹Indian Institute of Tropical Meteorology, Pashan, Pune 411 008, India

²Indian Institute of Science, Bengaluru 560 012, India

³India Meteorological Department, New Delhi 110 003, India

⁴Savitribai Phule Pune University, Pune 411 007, India

⁵Indian Institute of Science Education and Research Mohali, Mohali 140 306, India

⁶Indian Agricultural Research Institute, Pusa, New Delhi 110 012, India

⁷Ministry of Earth Sciences, Government of India, New Delhi 110 003, India

The objectives of the Winter Fog Experiment (WIFEX) over the Indo-Gangetic Plains of India are to develop better now-casting and forecasting of winter fog on various time- and spatial scales. Maximum fog occurrence over northwest India is about 48 days (visibility <1000 m) per year, and it occurs mostly during the December–February time-period. The physical and chemical characteristics of fog, meteorological factors responsible for its genesis, sustenance, intensity and dissipation are poorly understood. Improved understanding on the above aspects is required to develop reliable forecasting models and observational techniques for accurate prediction of the fog events. Extensive sets of comprehensive ground-

based instrumentation were deployed at the Indira Gandhi International Airport, New Delhi. Major *in situ* sensors were deployed to measure surface micro-meteorological conditions, radiation balance, turbulence, thermodynamical structure of the surface layer, fog droplet and aerosol microphysics, aerosol optical properties, and aerosol and fog water chemistry to describe the complete environmental conditions under which fog develops. In addition, Weather Forecasting Model coupled with chemistry is planned for fog prediction at a spatial resolution of 2 km. The present study provides an introductory overview of the winter fog field campaign with its unique instrumentation.

Keywords: Aerosols, atmospheric profiles, forecasting, winter fog.

THE presence of heavy and extended period of fog in the northern regions of India is one of the major weather hazards, impacting aviation, road transportation, economy and public life in general. Maximum fog events occur over Northwest India, where on an average about 48 (visibility <1000 m) events are observed per year. All-India annual morning poor visibility days (PVDs <4 km) have increased from 6.7% days in 1961 to 27.3% days in 2008 (ref. 1). Recent studies on fog in India during the past 10–15 years have raised significant socio-economic concerns due to increase in frequency, persistence and intensity of fog occurrence over the northern parts of the

country^{2,3}. A total of 140 flights were cancelled (in addition, 143 were diverted and 363 were delayed) from the Indira Gandhi International Airport (IGIA), New Delhi causing a loss of Rs 120 million to the aviation sector during the winter period 2013–14 (ref. 4).

Radiation and advection fog are common in the winter season. Studies on fog in India indicate that it forms over varied temporal and spatial scales, and shows significant variability from year to year depending on the combination of local meteorological conditions and synoptic-scale weather systems^{3,5–7}. Radiation fog forms generally in the rear sector of a western disturbance (WD) that has an influence on the country during winter, whereas advection fog develops in the forward sector of the WD⁸. WD causes light to moderate spells of rainfall over the northern region during winter⁷, which advects large amount of moisture into the lower troposphere and further through

*For correspondence. (e-mail: sachinghude@tropmet.res.in)

evaporation. In addition, irrigation for winter crops and the irrigation network in this region add significant amount of moisture into the lower atmosphere⁵. As soon as the lower-level ridge line forms over the northern region, it enforces persisting stable (calm winds) and clear atmosphere conditions and lower surface temperature leading to the formation of strong surface-based inversions, which facilitate fog formation and its sustainment in the area^{2,8}. The land surface processes and emission sources in the Indo-Gangetic Plains (IGP) region contribute to moisture supply and high concentrations of pollutants^{9,10} which favour the persistence of hazy/foggy conditions for extended periods. Sometimes the fog continues to persist for weeks over a vast area with only partial lifting in the late afternoon. Compared to other areas of the world, fog events observed over northern region of India form rapidly, are largest in coverage area and longest in duration. Combinations of these factors introduce formidable challenges for fog forecasting over the region.

The typical fog conditions are understood to be thick surface fog as the lower atmosphere gets saturated, and some of these conditions are coincident with the large-scale advection of moisture. Subsequently, boundary layer processes need to be simulated well so as to describe fog as a near surface cloud. Conventional empirical models/approaches are not accurate^{11,12} and weather prediction models cannot be efficiently incorporated for predicting fog and visibility conditions near the surface¹³. The weather prediction models have to be tested and evaluated for several fog episodes, and suitable sets of physical and chemical parameterization need to be identified in relevance to the situation and location of the study. This is a two-step process where the performance of the meteorology model and the pollution forecast model need to be evaluated systematically. These evaluations need dependable and accurate micrometeorological observations during the fog events. From the meteorological point of view, the stable boundary layer processes are typically not represented well in the meteorology model, which requires mixing. One of the key linkages is between gas phase soluble organic compounds, secondary aerosols and cloud condensation nuclei (CCN). These need to be better parameterized in numerical models. Sensitivity studies carried out by chemistry transport model show that organic compounds, secondary aerosols such as SO_4^{2-} , NH_4^+ , NO_3^- and inorganic gaseous precursors such as SO_2 , NO_x and NH_3 have substantial impact on the fog formation process and microphysical structure of the fog event¹⁴. Thus, the microphysical processes become important to be predicted by the numerical model.

Studies carried out in India indicate significant interest on fog phenomena^{2,6,7,15-23}. There is significant compulsion from air, rail and road transport authorities to know whether a fog will occur during the next 24 h, and if so, what could be its intensity, onset time and dissipation

rate. For improving location-based fog monitoring in real time, major airports in North India (e.g. Delhi, Jaipur, Amritsar, Varanasi and Lucknow) have been equipped with runway visual range (RVR) for air traffic operation. Presently, a set of 22 live RVRs provide 15-sec fog updates live to air traffic controller (ATC). In addition, India Meteorological Department (IMD) is issuing now-casting and forecasting based on synoptic data, satellite maps (INSAT 3-D), and an empirical-based fog prediction system^{18,24,25}. Some efforts have also been made to provide forecast using dynamical models²⁶. Even though the fog now-cast and forecast issued by IMD are useful, there is scope for further improvement in skill and also to develop models for predicting characteristics of fog, like its intensity and duration.

However, not much progress has been made in understanding of the physical characteristics of fog, factors responsible for its genesis, intensity and rapid thickening of the fog layer over IGP and ultimately to develop reliable models for predicting different characteristics of fog. There has been a lack of detailed collocated observations, including the micrometeorological, radiative, chemical and microphysical aspects to study fog phenomena. The interlinking processes for fog formation, sustainment and its dissipation are not well understood. The role of aerosols as CCN and fog droplet formation need to be understood for accurate representation of fog droplet activation and growth. What kind of near-surface thermodynamical conditions lead to the initiation of a fog event? How is the high aerosol number concentration a prerequisite for fog formation? What processes are responsible for extended-period fog and dissipation of the same? How microphysical aspects are decisive for the fog lifecycle and how does boundary layer dynamics control fog microphysics? What are the key parameters needed for physical parameterization of fog and is there room to improve fog prediction with better physics?

In an effort to gain insight into these questions, the Ministry of Earth Sciences (MoES), Government of India (GoI) has taken up, a multi-institutional initiative to conduct an intensive ground-based measurement campaign at IGIA, to understand different physical and chemical features of fog and factors responsible for its genesis, intensity and duration. Winter fog experiment (WIFEX) was conducted on a pilot mode at IGIA, which will be repeated during the next 3–4 consecutive winter seasons. A field campaign was designed to include simultaneous measurements of surface meteorological conditions, radiation balance, turbulence, thermodynamical structure of the surface layer, droplet and aerosols microphysics, aerosols, fog water chemistry, vertical profile of winds, temperature and humidity to describe the complete environment in which a fog develops. The main objective of this experiment is to study the characteristics and variability of fog events and associated dynamics, thermodynamics and fog microphysics, with the aim to achieve

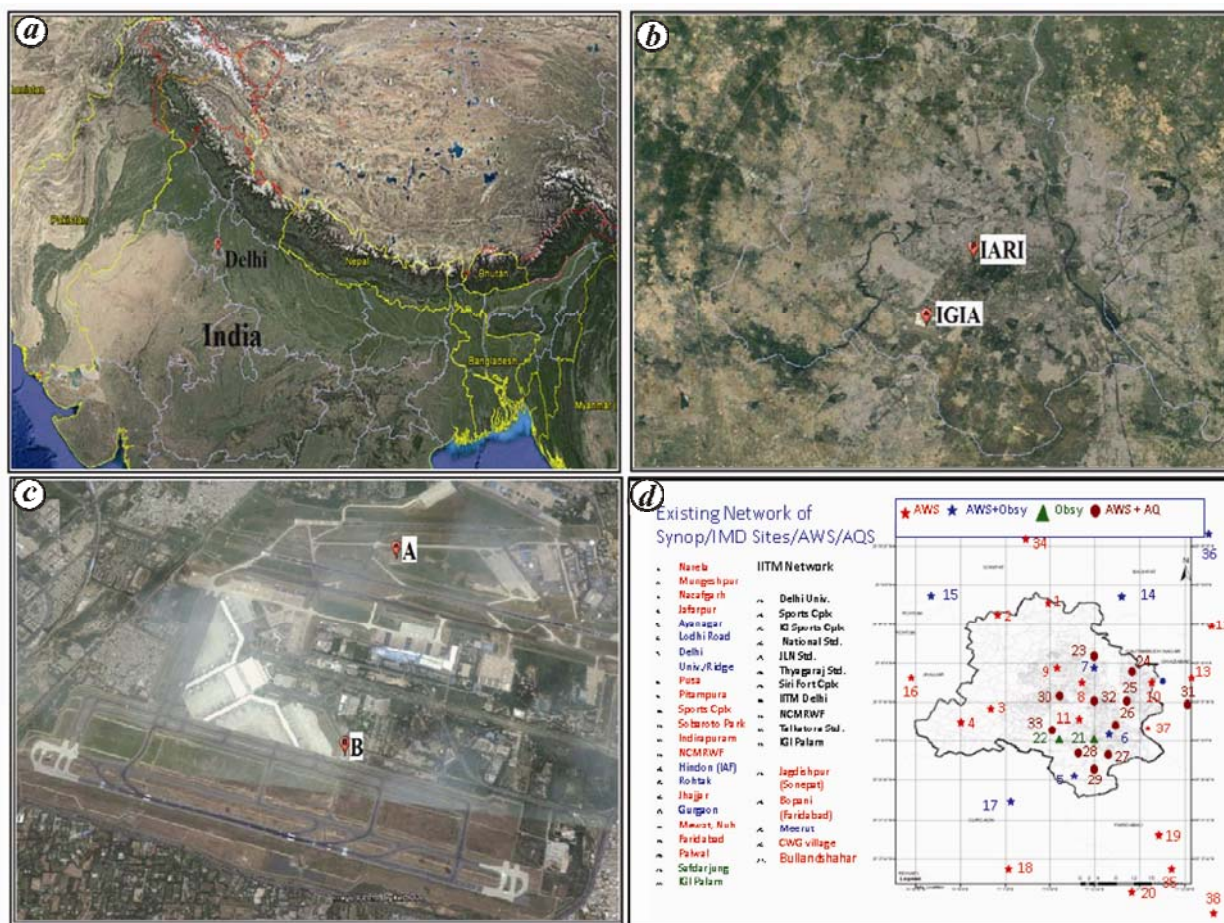


Figure 1. Geographical map of (a) the study region, (b) location of fog campaign sites and (c) locations where the observations were taken inside the airport. (d) locations of the weather monitoring stations across Delhi.

better understanding of the fog life cycle and ultimately improve capability in fog prediction.

This article provides information on the experimental set-up, instrumentation details and dataset of the two-month long winter fog field campaign conducted at IGIA. A summary of the preliminary results on physical, chemical and optical properties, microphysics and dynamics of fog observations is also provided.

Fog field campaign and data

Experimental site

The winter fog field campaign was conducted at IGIA (28.56°N, 77.09°E) and Indian Agriculture Research Institute (IARI; 28.63°N, 77.16°E), New Delhi between 15 December 2015 and 15 February 2016. The airport site has a vast open area with frequent formation of fog during the winter season along with the rich spatial observations of visibility across the airport area. Most of the instruments were installed on the northern side of the airport ~400 m away from the runway (east–west direction),

which was less operational during the campaign period. The IARI site, which is located 12 km away from the airport in a relatively less built-up area, also has vast open area with frequent fog formation; however it has more vegetation cover. The IARI site is characterized by irrigated agricultural field about 1 km in radius and surrounded by densely populated residential area (Figure 1). In addition, Delhi has a network of automatic weather stations (~37), air-pollution monitoring network (~12) and operational radiosonde stations of IMD. Figure 1 shows the geographical map of the region with locations of the fog campaign sites and weather stations across Delhi metropolitan area.

Experimental set-up

A set of *in situ* and remote sensing instruments were deployed at IGIA and IARI campus from four Indian research/educational institutions: Indian Institute of Tropical Meteorology, Pune; IMD, Delhi; Indian Institute of Science Education and Research (IISER), Mohali, and IARI, Delhi. The instruments deployed fall into the

RESEARCH ARTICLES

Table 1. Instruments deployed during Delhi winter fog campaign, parameters that can be retrieved from their measurements, instrument range (vertical range, spectral range as relevant), and resolution, and location (IGIA (A): 20 m tower, IGIA (B): watch tower 12 m)

Category	Instruments	Measured parameters	Range (RA) and Resolution (RI)	Location
Ground and surface properties	Integrated soil temperature and moisture probes (5 TM, Decagon Devices, Inc., USA) placed at 0, -2, -5, -10, -20, -30, -50 cm depths	Soil temperature, volumetric water content, thermal conductivity in the ground	RA: 0–50 cm RE: 1 min	IGIA, New Delhi
	Heat flux plates (HFP01C, HukseFlux, USA) placed at -5 cm depth	Soil heat flux	RA: 0–5 cm RE: 1 min	IGIA (A)
Surface layer meteorology	EC system consisting of fast-response 3D sonic anemometer–thermometer (Windmaster Pro, Gill Instruments, Inc., UK) and a CO ₂ /H ₂ O infrared gas analyser (IRGA model: LI-7200 closed path CO ₂ /H ₂ O analyser, Licor Inc., USA; on 20 m tower)	Measurement of surface fluxes of heat, water vapour, momentum, CO ₂ and turbulence	RA: 2.5 and 12.5 m RE: 10 Hz; 30 min averaged fluxes	IGIA (A)
	Multi-component weather sensors (WXT 520, Aisala Oyj, Finland; on 20 m tower)	Barometric pressure, air temperature, relative humidity (RH), wind speed and direction, precipitation	RA: 2, 8, 12, 16, 20 m RE: 1 min	IGIA (A)
	Temperature and RH sensor (HMP 45C Vaisala Oyj, Finland; On 20 m tower)	Air temperature and RH at different heights	RA: 1, 4, 6, 10 m RE: 1 min	IGIA (A)
	Fine wire thermocouple (Chromel–Constantan) temperature sensor; made inhouse (on 2 m mast)	Close to surface air temperature profile	RA: surface to 1.6 m at 25 levels; separation between sensors increasing with height	IGIA (A)
Radiation fluxes	Net radiometer (CNR4, Kipp and Zonen Inc., USA; on 20 m tower)	Short wave and long wave radiation, net radiation, albedo	RA: Height –2 m RE: 1 min	IGIA (A)
Atmospheric profiles	Wind profiler (Astra Microwave; on 15 m building)	Detects wind speed and wind directions at various levels above ground up to 8 km with 280 MHz frequency	RA: 0–8 km RE: 1 min	IGIA
	SODAR (SFAS-64, Scintec GmbH, Germany; on 12 m watch tower)	Profiles of u, v and w components of wind and their standard deviations. Operating frequency: 2.8–4.5 kHz	RA: 0–450 m RE: 1 min	IGIA (B)
	Radiometer (MP 3000-A radiometric S Corp., USA; on 12 m watch tower)	Water vapour, temperature, pressure, RH, cloud base height	RA: 0–10 km RE: 1 min	IGIA
	MRR (micro rain radar; Metech Germany; on 15 m watch tower)	Measures rain precipitation, rain intensity, drop size distribution, falling velocity frequency = 24 GHz	RA: 0–3 km RE: 1 min	IGIA (B)
	Tethered sonde balloon with athelometer and grimm (anasphere)	Wind speed, wind direction, temperature, humidity, black carbon (BC) and boundary layer parameters	RA: 0–1 km RE: 1 min	IARI, New Delhi
Aerosol and fog optical properties	Fog sampler No: 2	Visibility, temperature and RH	RA: 0–10 km RE: 1 min	IGIA, New Delhi

(Contd)

Table 1. (Contd)

Category	Instruments	Measured parameters	Range (RA) and Resolution (RI)	Location
Aerosol and fog optical properties	Disdrometer (Drstomet Ltd; on 15 m watch tower)	Drop size distribution	RA: Surface RE: 1 min	IGIA (B)
	CCN (Droplet Measurement Tech)	Measures cloud condensed nuclei particles in the wavelength range 0–75 nm	RA: Surface RE: 1 min	IGIA (B)
	NG athelometer (Maggi Scientific)	BC mass and absorption coefficient	RA: Surface RE: 1 min	IGIA (B)
	MCPC (mixing condensed particle counter)	Size of airborne particles	RA: Surface RE: 1 min	IGIA (B)
	Nephelometer (Ecotech)	Scattering coefficient 450, 550, 700 nm	RA: Surface RE: 1 min	IGIA (B)
	NH ₃ analyser (Tiger Optics)	Concentration of atmospheric ammonia	RA: Surface RE: 1 min	IGIA (B)
	SO ₂ analyser (Ecotech)	Concentration of atmospheric sulphur dioxide	RA: Surface RE: 1 min	IGIA (B)
	OC EC sampler (Envirotech)	Measures organic and elementary carbon in aerosols	RA: Surface RE: 4 h	IGIA (A)
	PM _{2.5} Sampler	PM _{2.5} , chemical composition	RA: Surface RE: 4 h	IGIA
	PM ₁₀ Sampler	PM ₁₀ , chemical composition	RA: Surface RE: 6 h	IARI, New Delhi
	PAX (photo acoustic extinctions) (DMT)	Scattering and absorption coefficients, SSA, BC mass	RA: Surface RE: 1 min	IARI
	Athelometer (MEGASCI)	Absorption coefficient, BC	RA: Surface RE: 1 min	IGIA (B)
	GRIMM	Aerosol particle size and mass distribution. Optical range 0.3–20 nm	RA: Surface RE: 1 min	IGIA (A)
	CDP (cloud droplet probe)	Drop size 2–50 µm	RA: Surface RE: 1 min	IGIA (A)
	SMPS APS (TSI Devices)	Size and mass distribution of particles (0.3–800 nm)	RA: Surface RE: 1 min	IGIA (B)
Total sky imager (TSI)	Real-time sky images and fog/cloud fraction	RE: 1 min interval	IGIA (B)	
PTRMS offline sampling	VOC	RA: 0–15 m RE: 3 times per day after every 6 h	IGIA (A)	

following categories: ground and surface properties, surface layer meteorology, atmospheric profiles, micro-physical parameters, radiation, and aerosol and fog chemical and optical properties. The aim of such a combination was to measure simultaneously all key processes in fog genesis and lifecycle. Table 1 shows the instruments deployed at both sites.

Surface layer meteorology, radiation fluxes, ground and surface properties: A 20 m micrometeorological tower was installed at IGIA (location A in Figure 1c), and equipped with multi-component weather sensors at five levels, air temperature and humidity sensors at four

levels, 2D sonic anemometers at four levels and four-component net radiation sensor at one level. Four components of radiation fluxes were measured using Hukse flux net radiometer at 2 m height. Soil temperature and soil moisture were measured at six levels up to 50 cm depth using an integrated soil moisture–temperature sensor, and soil heat fluxes were measured at 5 cm below the surface using two heat flux plates for redundancy. In addition, eddy covariance sensors (Licor Inc.) for turbulence and surface flux measurements were set up at 2.5 and 12.5 m. Positioning of the turbulence sensors are based on footprint analysis, considering the site characteristics. This suite of slow- and fast-response sensors allows us to

characterize complete radiation and surface energy balance at the site. Visibility, temperature, and humidity sensors were also installed at IARI. Table 1 provides details of these sensors. Additionally, a small 2 m mast equipped with 25 closely placed, fast-response thermocouple temperature sensors (Savitribai Phule University, Pune) was installed close to the 20 m tower. Temperature sensors were placed between the surface and 1.6 m to measure lifted temperature inversion close to the surface to studies the Ramdas layer.

Atmospheric profiles: A mini-SODAR was operated approximately 50 m away from the micrometeorological tower to profile u , v and w components of wind velocities and their standard deviations up to 500 m, at 15 min temporal resolution. Due to poor signal-to-noise ratio, measurements are available only up to 200 m for most periods. Most of the other instruments (Table 1) were installed close to the 20 m tower, except 1280 MHz UHF-wind profiler and microwave radiometer, which were installed at another location (location B in Figure 1c) to extend measurements of the wind, temperature and humidity profiles up to 10 km. A ground-based microwave radiometer (Radiometrics, Inc.) was continuously operated in co-location with the wind profiler during the campaign for observations of vertical profiles of air temperature, water vapour mixing ratio and cloud liquid water. The 35-channel microwave radiometer also provides column integrated precipitable water content, cloud liquid water path and cloud base height. We can also get an indication of drizzle and precipitation from the instrument. A tethered balloon equipped with thermodynamic sensors was operated at this site during nocturnal periods as part of the intensive field campaign (from 9 pm to 9 am IST) to monitor vertical thermodynamic structure up to 1000 m. Measurements on the thermodynamic structure were also carried out by IMD at a site about 10 km away from the IARI site, using radiosonde profiles routinely at 0000 and 1200 IST.

Aerosol, and fog chemical and optical properties: Visibility at 1 min resolution was monitored inside the airport area using visibility meter on fog sampler and the RVR system of IMD installed at each runway, which was approximately 100 m from the detailed observational set-up. Fog presence was monitored using satellite maps from fog detection algorithm developed for INSAT 3D satellite joint ISRO (Indian Space Research Organization) – IMD initiative. From ground-based instrument, fog presence was also monitored using total sky imager (TSI) installed at the airport. TSI gives real-time sky images from which fog/cloud fraction is computed. Fog droplet size distribution (2–50 μm) and liquid water content (LWC) were monitored at 3 m by a cloud droplet probe (CDP; Droplet Measurement Technologies, Inc.) used for airborne observations of CAIPEEX, which was

modified with an aspirator for ground-based operations. For characterizing absorption and scattering properties of the aerosols, aethalometer, nephelometer and photoacoustic extinctions (PAX) were deployed to collect data at 1 min interval. Filter sampling was done at every 6 h to analyse the presence of aerosol chemical properties, including metals, dust, black carbon (BC), organic carbon, and hydrophilic and hydrophobic particles. Ambient concentrations of sulphur dioxide (SO_2) and ammonia (NH_3) were monitored at the 1 min intervals. Speciation of volatile organic compounds (VOCs) was performed at the surface, 10 and 20 m sampling heights three times in a day before, during and after the fog events. Samples were collected for the dense fog cases (visibility <50 m) to analyse the chemical characteristics of fog water, including isotopic analysis. Other measurements on aerosol properties include mixing condensation particle counter (MCDP), aerosol particle number and mass size distribution (0.23–20 μm , SMPS: 0.3–800 nm). A CCN counter was installed to measure the number concentration of CCN.

Results

Fog climatology and trend in Delhi

Background information on the fog events at Delhi is presented in this section. Table 2 shows monthly climatology of fog occurrence during the winter season (November–February) based on long-term visibility data (1981–2014) archived in IMD from IGIA and Safdarjung Airport. Events were classified as fog and dense fog based on visibility observation below 1000 and 200 m threshold respectively. The long-term mean indicates that around 60% (74 days) of all days have fog events and 16% (20 days) of all days have dense fog events in Delhi during each winter season. Maximum fog and dense fog events are mostly seen in December and January. Figure 3 shows the time series of seasonal (December and January) fog days (hours) from 1981 to 2016 for fog and dense fog events. Although significant inter-annual variability is seen, overall it shows a gradual increase in a number of fog days (hours) over three-decades. Briefly, it indicates that number of fog days has increased from 38 (~250 h) in the beginning of 1980s to about 65 in recent years (~600 h). A similar trend is also seen in eastern-central China and linked to increased urban aerosol loading²⁷. The results can be interpreted as an indication of the role of increasing air pollution and humidity^{2,3} to increase fog events over this region. However, we will not explore this aspect further in this article.

Fog events in winter 2015–16

The climatological conditions experienced during winter fog field campaign included hotter and drier days than

Table 2. Fog occurrence using longer period visibility data 1981–2014

Fog at IGIA		November	December	January	February	Seasonal
Fog	Days	10	24	25	15	74
	Hours	85	246	243	110	684
Dense fog	Days	1	6	10	3	20
	Hours	2	34	52	11	99

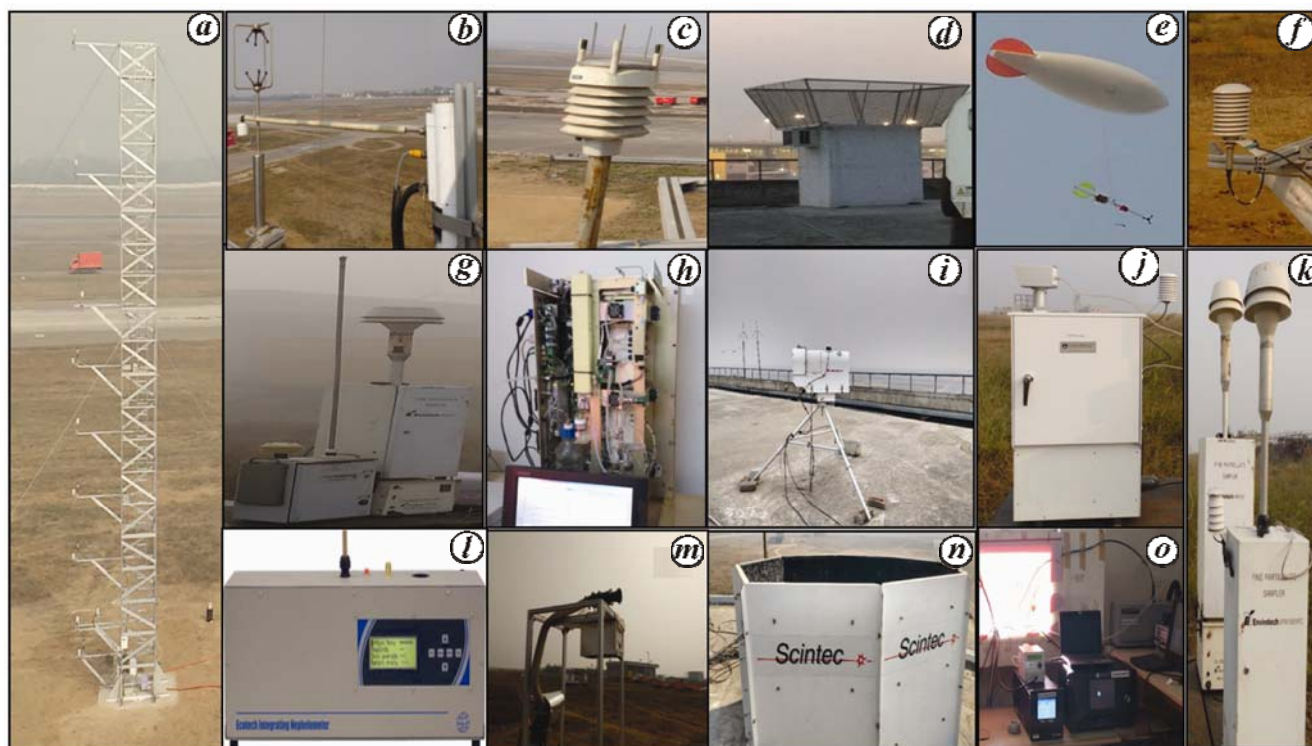


Figure 2. Instruments deployed during winter fog field campaign at Indira Gandhi International Airport (IGIA), New Delhi: *a*, 20 m eddy covariance flux tower; *b*, Eddy covariance system; *c*, All-in-one weather sensor; *d*, Wind profiler; *e*, Tethered sonde balloon; *f*, Gill wind sensors; *g*, GRIMM; *h*, CCN counter; *i*, Microwave radiometer profiler; *j*, Fog collector; *k*, PM₁₀ and PM_{2.5} samplers; *l*, Nephelometer; *m*, CDP with aspirator; *n*, SODAR; *o*, Aethelometer, NH₄ analyser and MCPC.

average winter with almost negligible dense fog events in December. In winter 2015–16, mean hourly temperature was above $\sim 5^{\circ}\text{C}$ than normal winter temperature (based on the long-term average) in Delhi. The dense fog events were significantly less in number than the 33-year climatology. However, in January and February, a total of eight dense fog events occurred. Table 3 shows the main characteristics of fog events observed during fog campaign. A significant variability of length, type and intensity of fog was sampled. Most of the dense fog (visibility < 50 m for more than 3 h) events represented an opportunity to sample sufficient fog water for investigating the chemical composition of the dissolved material in fog droplets. Table 3 also indicates the events during which fog water samples were collected.

Out of these eight dense fog events, extremely dense fog events occurred during 21–22 as well as 23–24 January 2016. These events were characterized by very low

visibility (< 50 m) for almost 6–8 h, while fog conditions (visibility < 1000 m) lasted for a total of about 30 h. In this article we have presented preliminary results of fog events that occurred between 21 and 25 January 2016, particularly the 23 and 24 January fog event as a typical case during the fog campaign.

Key processes involved during fog event: 21–25 January 2016

This section presents preliminary results on the temporal evolution of multiple parameters and processes throughout the life cycle of a fog event. MODIS (Terra) satellite images on 23 and 24 January 2016 (Figure 4) clearly indicate thick clouds over the northeastern parts of India extending from Pakistan to eastern Uttar Pradesh. During 23 and 24 January 2016, the synoptic condition was

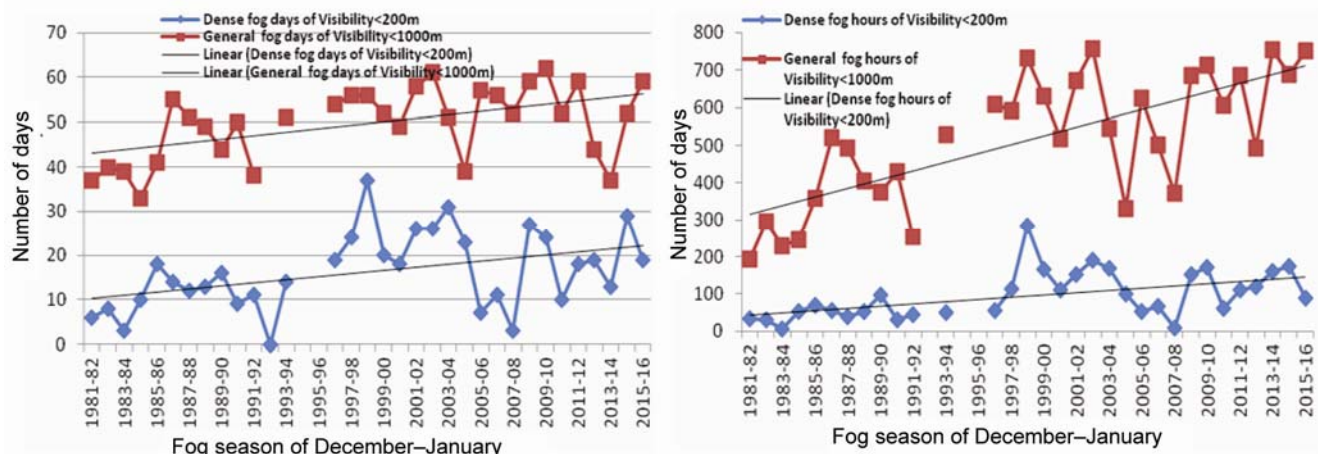


Figure 3. Temporal evolution of seasonal fog (December and January) and dense fog from 1981 to 2016. Red line shows temporal evolution of visibility conditions for less than 1000 m; blue line shows temporal evolution of visibility less than 200 m and black line shows the linear fit.

Table 3. Summary of fog events observed during winter fog field campaign at IGIA, with dates, onset time and duration for different visibility thresholds

Days	Total fog					
	<1000 m (moderate)		<200 m (dense)		<50 m (very dense)	
	Onset–dissipation (h)	Total fog hours	Onset–dissipation (h)	Total fog hours	Onset–dissipation (h)	Total fog hours
22–23 December 2015	1300–0800	19	0000–0300	03	Nil	Nil
23–24 December 2015	1300–0600	17	0100–0300	02	Nil	Nil
24–25 December 2015	2000–0300	07	Nil	Nil	Nil	Nil
26–27 December 2015	2200–0100	03	Nil	Nil	Nil	Nil
07–08 January 2016	1200–1100	23	2000–0600	10	2200–0600	08
11–12 January 2016	2300–0300	04	Nil	Nil	Nil	Nil
14–15 January 2016	1500–0500	14	2000–0300	07	2000–0200	06
15–16 January 2016	2100–0000	03	Nil	Nil	Nil	Nil
17–18 January 2016	1600–0600	14	0000–0500	05	0200–0400	02
21–22 January 2016	1600–0700	15	2100–0500	08	2200–0400	06
22–23 January 2016	1400–0600	16	2200–0400	06	0100–0400	03
23–24 January 2016	1600–1000	15	2100–0600	09	2100–0500	08
29–30 January 2016	2200–0100	03	Nil	Nil	Nil	Nil
31 January–01 February 2016	2200–0500	07	0000–0500	05	0000–0400	04
07–08 February 2016	2100–0500	07	2200–0400	06	2200–0300	05
Total fog hours		167 (46 + 121)		61 (5 + 56)		42 (0 + 42)

characterized by low wind speed and persistent subsidence of high pressure over a region with a northerly and northwesterly zonal advection supporting cold air advection (see IMD synoptic charts in Figure 4) over the site. The northerly and northwesterly advection affected whole boundary layer and contributed to a net decrease in the temperature field.

Atmospheric profiles: Microwave radiometer was operated at location B of IGIA to measure vertical profiles of air temperature, water vapour mixing ratio and cloud liquid water. The fog layer vertical structure and its associated thermodynamic features can be noted from the

microwave radiometer profiler (Figure 5). The equivalent potential temperature (θ_E) estimated from radiometer observations is presented for every minute. The features presented in Figure 5a illustrate high θ_E prior to all fog events, especially it is the highest preceding the onset of fog on the evening of 23 January. The imminent fog could be identified from θ_E at least 2–3 h prior to the event. The vertical structure of the fog layer could also be assessed prior to its occurrence with this parameter. These fog events are illustrated in Figure 5b with the cloud liquid density retrieved by the K-band of microwave radiometer profiler. It may be noted that the fog layer has a vertical structure and radiometer liquid profile

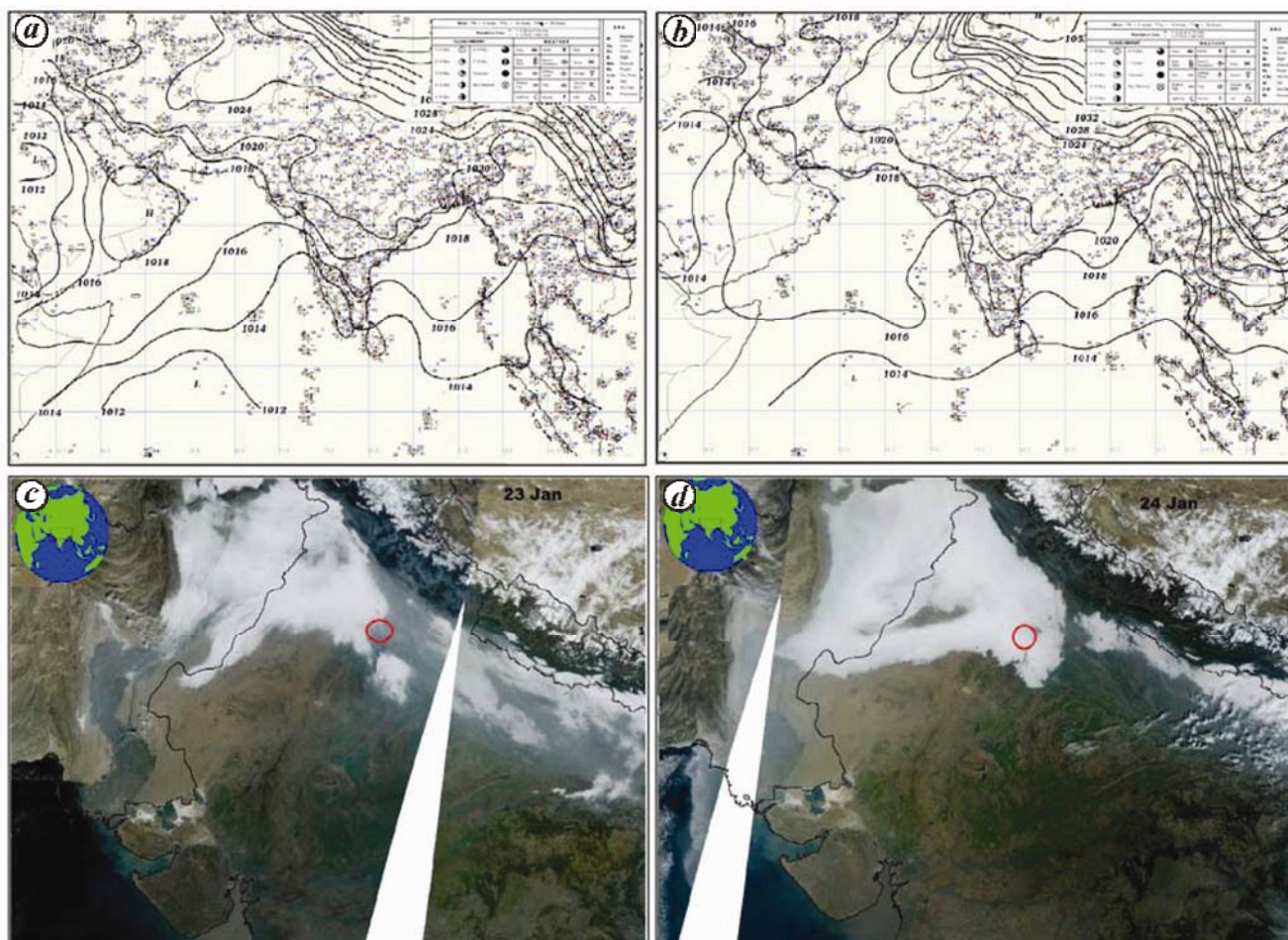


Figure 4. IMD synoptic chart: (a) 23 January 2016 and (b) 24 January 2016. Blanket of fog/shallow clouds over the Indo-Gangetic Plains seen from Terra MODIS on (c) 23 January 2016 and (d) 24 January 2016.

could be used as an indicator for the fog layer thickness and its intensity. The fog layer is eroded from the top (usually <math><1\text{ km}</math>) and also from the surface. As a result, the highest liquid water is noted in the middle of the fog layer. The observations suggest a mini convective boundary layer structure (as may be inferred from the θ_E profiles), which is sustaining turbulence at the bottom and top of the fog layer. The liquid water profiles may be taken as a qualitative measure to discern the vertical structure of the fog layer; though comparisons with direct measurements are needed. The mid layer humidity present above 3 km indeed leads to thinner stratus clouds above the fog layer; however, this needs further investigation.

Tethersonde observations taken at the location outside the airport (near IARI) indicated clear deep moist layer up to a height of 300 m, which is persistent throughout the night (Figure 6). Significant variations indicate that the fog layer itself is dynamic and is eroded from the layer above with nearly 20% humidity. In spite of being dynamic, the moist layer stays deep and extensive. The BC observations made with the mini-aethalometer using

tethered balloon indicated very high mass concentration ($>10,000\text{ ng m}^{-3}$) in the upper layers near 400 m and more than $20,000\text{ ng m}^{-3}$ in the lower 200 m. The vertical structure of the thermodynamics thus indeed controls the accumulation of particles in the fog layer. The fog layer top mixing is possibly responsible for the significant dilution below, down to the 200 m during the tethered balloon observations. High concentrations in the lower layers are attributed to enhanced combustion activity and trapping of particles in the stably stratified layer.

Optical and microphysical properties: Development of fog is defined by a visibility lower than 1000 m at the surface. Surface visibility evolution at IGIA indicates that fog formation started (visibility $<1000\text{ m}$) on 23 January 2030 IST (Figure 7) and persisted till the next day on 24 January 1100 IST. The dense fog lasted more than 8 h, between 0230 IST (24 January) and 0930 (24 January), with surface visibility reduced from 100 m to close to zero, indicating very dense fog at IGIA (dense fog regime). Daytime temperature decreased from about 21°C (23 January) to about 11°C (24 January) after fog initiation

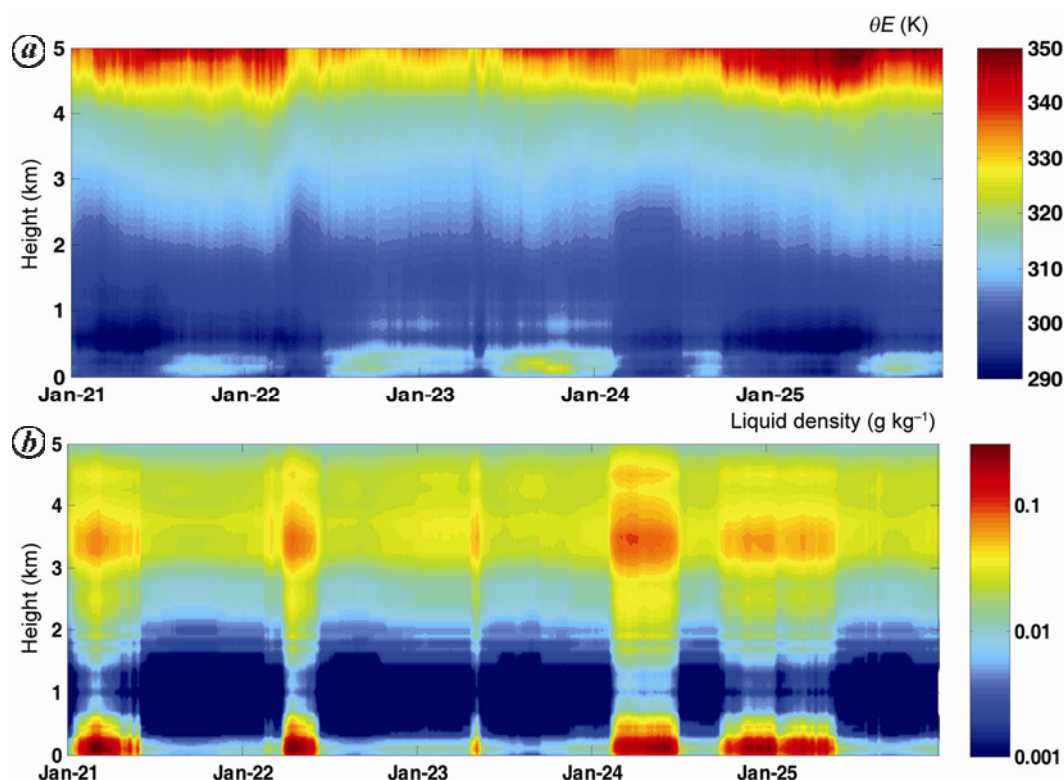


Figure 5. Time–height distribution of radiometer-derived (a) potential temperature (θ_e) and (b) radiometer liquid profiles (g kg^{-1}) during 21–25 January 2016.

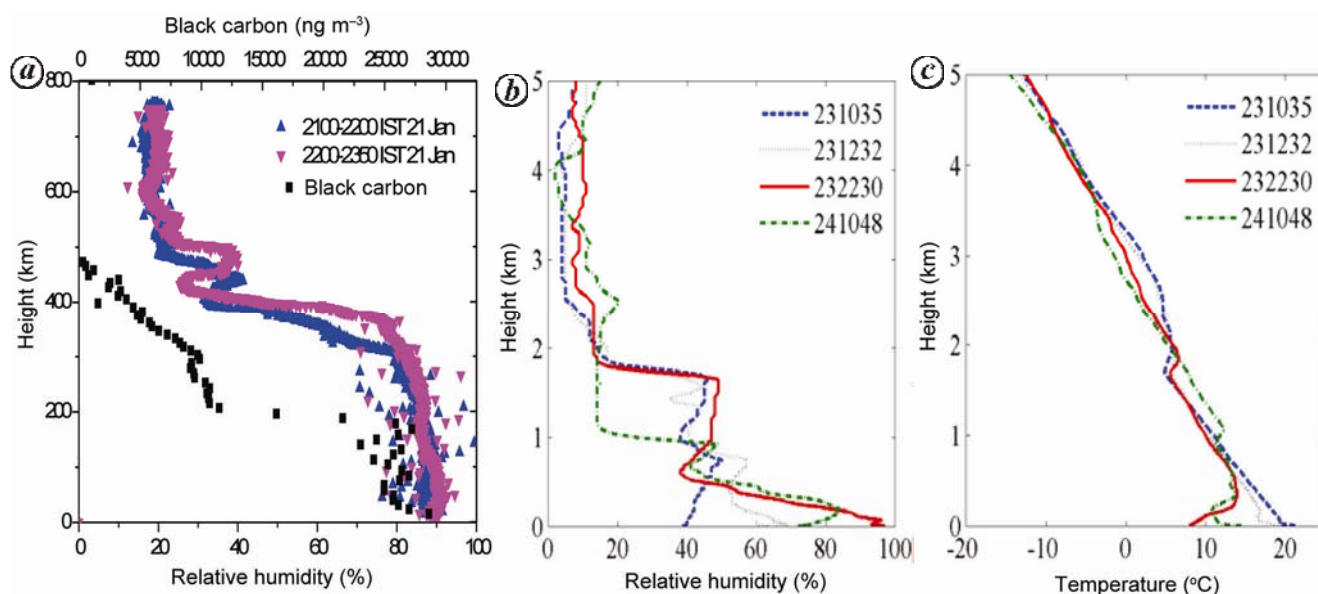


Figure 6. a, Tethersonde observations of relative humidity and black carbon mass concentration during the fog event at IARI site. Humidity (b) and temperature profiles (c) from radiosonde measurements in Delhi.

and remained low until the end of the fog event. Time evolution of temperature vertical profiles (Figure 6c) from radiosonde showed typical inversion layer developed below 700 m at the midnight (23 January 2230 IST). It can be seen that this event was characterized by hu-

midification (Figures 6b and 7c) in moderate turbulence near the surface. Couple of hours after the fog onset (23 January), surface layer became saturated and visibility dropped below 500 m and prevailed until the next day afternoon. This was also evident from the LWC at

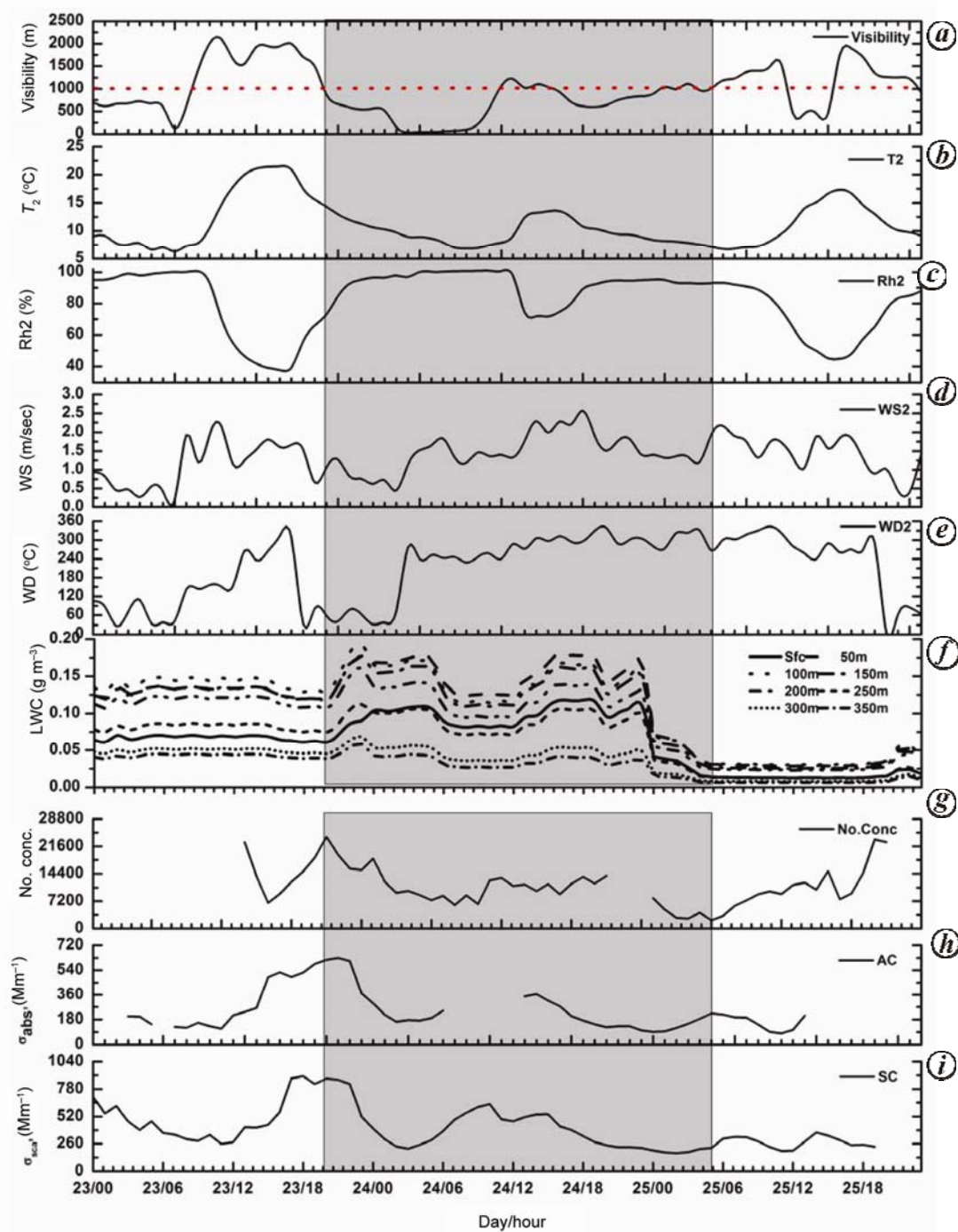


Figure 7. Time series of (a) observed visibility from runway visual range, (b) 2 m temperature, (c) 2 m relative humidity (d) 10 m wind speed, (e) 10 m wind direction, (f) liquid water content from Microwave Radiometer Profiler (MWRP), (g) number concentration from MCPC, (h) absorption coefficient, and (i) scattering coefficient from nephelometer during 23 January 00 UTC to 25 January 2300 UTC.

various heights obtained from the microwave radiometer profiler from the surface up to 350 m, which showed a sudden increase after the onset, remaining high until the dissipation of the fog in next day morning. Optical properties of aerosol observations (from the nephelometer) showed a sudden increase in both scattering (σ_{sca}) and

absorbing (σ_{abs}) coefficient immediately after the fog onset, which remained high until the fog was fully developed. This indicates that both scattering aerosols (mainly dust, sulphate and organic compounds) and absorbing aerosols (mainly elemental or BC and hematite dust) were present. In dense fog regime, however, both σ_{sca} and

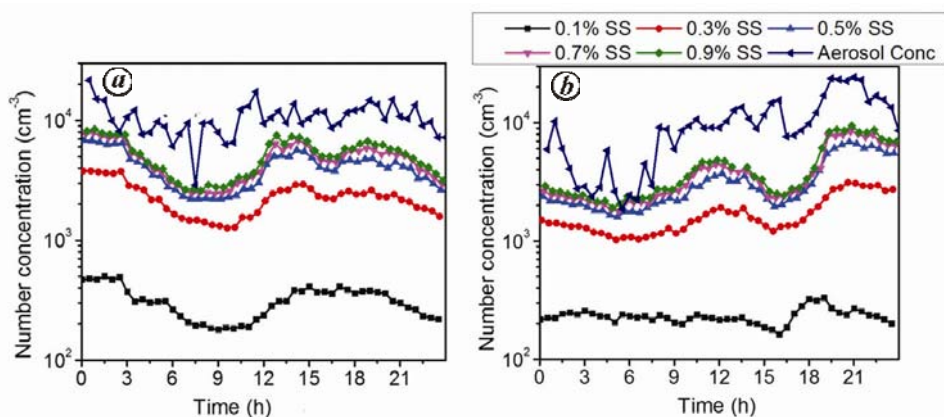


Figure 8. Total condensation particle number concentration and CCN number concentration at different supersaturations (0.1%, 0.3%, 0.5%, 0.7% and 0.9%) during 24 and 25 January 2016.

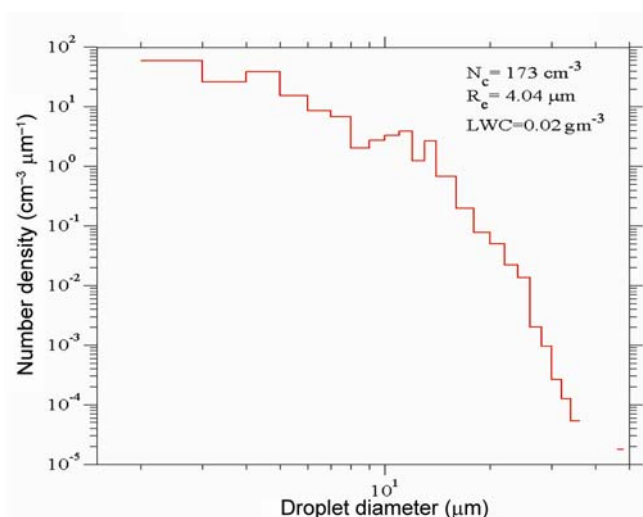


Figure 9. Mean particle size distribution during a fog event on 23 January 2016 from 21:01 to 22:31 UTC at IGI airport.

σ_{abs} dropped to lower values, possibly due to activation of aerosols into fog droplets and collision of aerosols with activated fog droplets.

Around 1100 IST on 24 January, although the temperature was low, humidity decreased to about 70% and partial dissipation of fog occurred (visibility between 1000 and 1500 m), which is also evident by the low LWC during this period. However, in a couple of hours, surface layer became sub-saturated leading to elevated LWC values which dropped visibility again below 1000 m. This low visibility condition (visibility between 750 and 1200 m) continued till the next day morning. The fog event ended at 0500 IST on 25 January. The observational site is close to the runway; therefore, there is a constant supply of aerosols from aircraft emissions. Also, Delhi being a highly polluted city^{28,29}, there is a constant supply of aerosols due to different anthropogenic activi-

ties. Observations of condensation particle count (CPC) indicated values between 2000 and 35,000 cm^{-3} during all conditions at the measurement location. Some of these may be attributed to aircraft emissions. The stable conditions lead to the trapping of pollutants and aerosol particles in the lower layers. This indicates that under the stable, cold and sub-saturated conditions (humidity greater than 80%), initiation of aerosol hydration (not full activation in fog droplets) as haze particles and, to a lesser extent, activation of aerosols in fog droplets^{30,31}, might have occurred resulting in quasi-fog/haze conditions following the dense fog. These observations show the complexity of the role of aerosols, suggesting that different processes are at play during various phases of the fog event.

CCN and fog droplet size distribution: Observations of CCN number concentration at different supersaturations (0.1%, 0.3%, 0.5%, 0.7% and 0.9%) measured at IGIA indicate high counts under foggy conditions (Figure 8). Large increase in CCN number concentration is observed during the dense fog regime. The diurnal cycle of CCN was significantly different for 24 January and 25 January (both fog days) from other locations where multiple peaks were noted³². However, at the airport location, CCN activity during the day is largely controlled by the enhanced emissions and by the fog events. The daytime peak coincides with the increase in solar insolation and surface heating. The emissions and enhanced stability during the evening of 25 January could also contribute to increase in the CCN number concentration.

Figure 9 shows an example of mean particle size distribution (PSD) during a fog event on 23 January 2016 from 21:01–22:31 UTC. PSD is observed from a cloud droplet probe (CDP) mounted inside an aspirator. The system was assembled and installed at IGIA during the winter fog campaign. While calculating PSD, a true air speed (TAS) of 15 ms^{-1} was considered as observed from

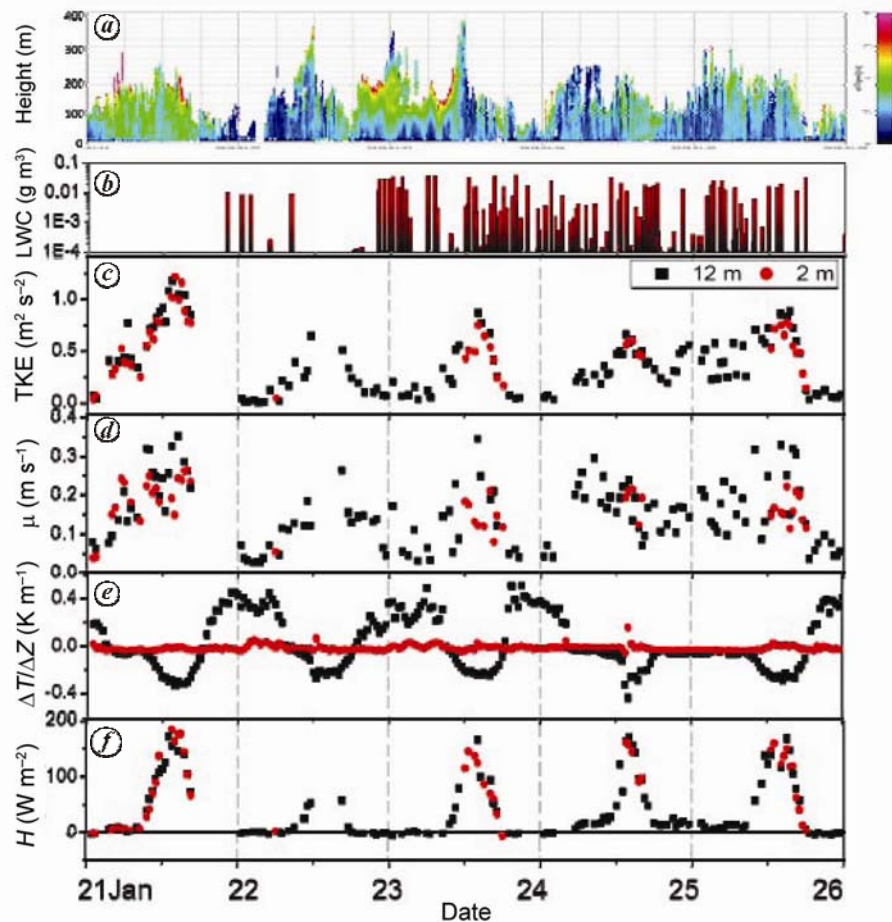


Figure 10. Co-located observations of (a) wind profiles from SODAR, (b) liquid water content from COP, (c) turbulent kinetic energy (TKE), (d) friction velocity, (e) temperature gradients at 2 and 12 m level and (f) sensible heat flux at 2 and 12 m.

an anemometer during calm conditions, with the aspirator under operation. The above period was selected as the fog formed in a condition where wind speed was less than 1 ms^{-1} . Note that the size diameter of condensed particles could be less than $D < 2 \mu\text{m}$, however, the lower detection limit of the CDP is $2 \mu\text{m}$. PSD is characterized by a broad spectra, where particle concentrations are extended to drop diameter of $D \approx 30 \mu\text{m}$. This suggests that though the concentrations of large particles are less, the present result suggests that very large particles are formed during a dense foggy condition. These large particles may play a significant role in fog dissipation as they can collect other particles in their vicinity and may also evaporate under sub-saturated conditions. We found that the fog particles grew larger and number concentration increased uniformly with time along the entire diameter ranges (not shown here), when the condition changed from the non-foggy to foggy.

Hence, it is most likely that the particles grew larger by vapour deposition/collection processes. Detailed understanding of the evaluation of PSD will be carried out in

future considering the thermodynamical and meteorological conditions. In addition, since the present set-up provides particle concentrations down to $D \approx 2 \mu\text{m}$ only, more observations are required from the combination of different instruments at least to the particle size of $D < 2 \mu\text{m}$, to characterize the activation of fog droplets.

Surface layer measurements: In Figure 10, for the surface layer, tower-based observations together with the liquid water derived from CDP probe and wind measurements from SODAR are presented for the surface layer. Different panels in the figure illustrate heat flux derived from the eddy covariance measurements at two levels (2 and 12 m), temperature gradients (1 and 4 m, and another for 10 and 16 m levels), friction velocity, turbulent kinetic energy (TKE), LWC from CDP and vertical profiles of wind speed from the SODAR, all from the collocated observations at location A. The heat fluxes at both levels are nearly the same, indicative of the well-mixed conditions. The heat flux becomes weak positive for the fog events and is attributed to surface layer warming due

to radiative effects. The radiative cooling near the surface is decisive for the formation of the fog layer; however, subsequent long-wave radiation interactions would support reducing stability as noted from near-surface gradients in temperature.

Temperature gradients are strong at 2 m level and weak at 12 m level (Figure 10). These are indicative of strong stability at 2 m level. However, the temperature gradient changes significantly and during the fog events on 25 and 26 January, the conditions were neutral or weakly unstable. This is due to long-wave radiative heating and also due to the turbulent mixing. The conditions on 24 January night did not favour such a scenario and the radiative heating due to fog layer did not reduce stability significantly. Mechanical turbulence (with friction velocity and the TKE) plays a decisive role in the sustainment of fog after the fog layer is formed. However, subsequently, TKE acts to dissipate the fog, but a more robust analysis of several events is needed to establish this aspect.

Observations in the roughness sub-layer: Characteristics of the temperature very close to the surface are studied with a special set-up, especially during night-time, with the help of closely spaced temperature profile measurements using fine-wire thermocouples. Figure 11 shows sample profiles from early morning hours of a mostly clear day (23 January) and that with dense fog (24 January). The clear sky morning hours on 23 January show (Figure 11a) presence of elevated minimum at around 0.05 m above the surface, with a temperature difference of up to 7°C between the surface and the lifted minimum. Air temperature increases sharply above the minimum up to 0.5 m. Occurrence of such elevated minimum and associated Ramdas layer has been reported earlier³³. The presence of the elevated minimum results in the formation of a very thin unstable layer close to the surface followed by a strong stable lower surface layer above. Close to sunrise, the elevated minimum erodes and later develops into a typical unstable surface layer. The features are different during the dense fog day (24 January, Figure 11b). The behaviour is the same as on 23 January until 02:00 LST with the presence of a strong elevated minimum, which changed afterwards. Although there is sharp cooling in the lower few centimetres, air temperatures above the minimum are nearly constant up to 1.6 m, indicating well-mixed conditions. This is due to the radiative effects of fog layer as indicated by the longwave warming. A typical surface layer temperature profile did not develop in the morning after sunrise, due to the persistence of foggy conditions. The role of such roughness sub-layer features on fog life cycle needs to be studied using detailed analyses and focused numerical modelling, and will be dealt separately.

Aerosols and fog water chemical composition: Aerosol and fog water samples were collected at IGIA during the

winter fog to examine the chemical composition of aerosols and fog water during major fog events (Figures 12 and 13). Aerosol samples were collected within size fractions of aerodynamic diameter (AD) <2.5 μm (fine mode). Mass concentration determined by gravimetric measurements and chemical analyses of the major aerosol components were performed using the standard sampling and analytical protocols for chemical constituents, e.g. major water-soluble inorganic species (K^+ , NH_4^+ , Na^+ , Ca^{2+} , Mg^{2+} , F^- , Cl^- , NO_3^- and SO_4^{2-}). These water-soluble chemical species were shown to represent on average 34% of total mass of $PM_{2.5}$, the rest being composed of a carbonaceous material for approximately 60% and the remaining undetected metallic components. Contribution of positive (cations) and negative (anions) electric charges in the measured composition was 31% and 71% respectively. The highest values of chemical species were observed during stable conditions especially during night hours on foggy days (~11% higher). Secondary inorganic aerosols (sulphate and nitrate) were the dominant ions (38%) in the chemical constituents of the fine particle and were higher during the fog events. The ratio of NO_3^-/SO_4^{2-} was found to be 0.63, which is indicative of dominance of stationary sources over the mobile sources.

A total of eight fog water samples were collected during dense fog events at IGIA, in January and February 2016 using an automatic fog water collector. All the samples were filtered through Whatman-41 filter paper and analysed for pH, conductivity and major ionic components. pH was measured using digital pH meter standardized with pH buffers of 4 and 7. The anions were measured using ion chromatography (IC) and cations by atomic absorption spectrophotometer (AAS). NH_4^+ was measured using the colorimetric method. However, HCO_3^{2+} was estimated from pH. It was observed that pH varied between 6.12 and 7.62 with an average of 6.91, which indicates the alkaline nature of fog water. The ionic conductivity varied from 588 to 1844 μS/cm, with an average of 1236 μS/cm, which indicates that the fog water is a concentrated solution with pollutants.

Figure 13 shows the average ionic composition of fog water. The concentrations of NH_4^+ , SO_4^{2-} , Cl^- , Ca^{2+} and NO_3^- were found to be very high, indicating that fog water is highly polluted. The ionic composition was found in the order of $NH_4^+ > SO_4^{2-} > Cl^- > Ca^{2+} > NO_3^- > Na^+ > Mg^{2+} > K^+ > F^- > HCO_3^-$. Among the anions, concentration of SO_4^{2-} (3763 μeq/l) was maximum, whereas NH_4^+ (4162 μeq/l) showed maximum concentration among the cations. The percentage contributions of various ionic components to the total measured chemical constituents in fog water are also shown in Figure 13 (inset). Maximum contribution was from NH_4^+ (28%) and SO_4^{2-} (26%). Ammonium and sulphate are in the form of ammonium sulphate ($(NH_4)_2SO_4$). Even though the acidic ions SO_4^{2-} and NO_3^- are very high, fog water is not acidic because of the very high concentration of neutralizing ions NH_4^+ and

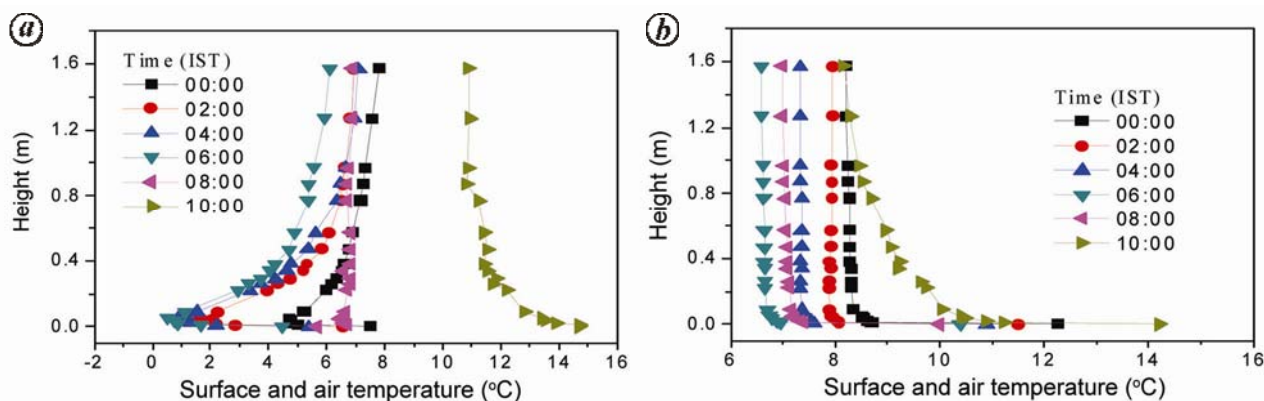


Figure 11. Surface and air temperature profiles measured using fine-wire thermocouples between the surface and 1.6 m with vertical separation increasing with height. Presented are early morning profiles (a) on a fairly clear day, 23 January 2016 and (b) a foggy day, 25 January 2016.

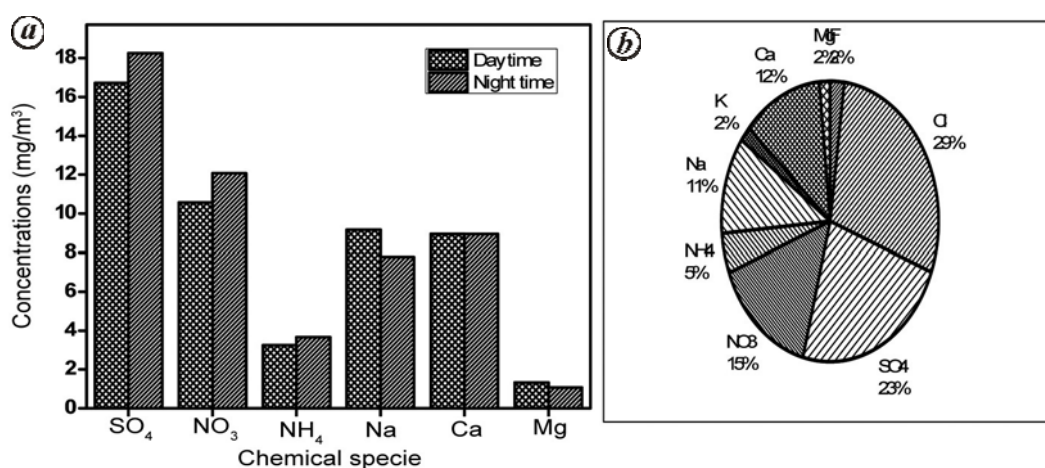


Figure 12. a, Contributions (in $\mu\text{g}/\text{m}^3$) of dominant positive and negative ions in $\text{PM}_{2.5}$. b, Percentage contribution of measured chemical constituents in $\text{PM}_{2.5}$ during foggy period over Delhi.

Ca^{2+} in the samples. The major neutralization was due to NH_4^+ followed by Ca^{2+} . The source identification study indicated that anthropogenic sources (61%) dominated over the marine (21%) and crustal sources (18%). Higher ionic concentrations in fog samples may be due to the combination of aircraft emissions at IGIA and those from other anthropogenic sources present in Delhi. However, further studies are required in the forthcoming winters to confirm the present results on fog water chemistry at Delhi airport.

Volatile organic compounds: Figure 14 summarizes the VOC speciation results for ambient samples collected in the morning, afternoon and night at 10 and 20 m sampling heights on 19 January 2016. VOCs were collected as whole-air samples and analysed using a high-sensitivity proton transfer reaction mass spectrometer (PTR-MS) at the Central Atmospheric Chemistry Facility IISER, Mohali^{34,35}. Gaseous VOC mass concentrations ranged from 197 to 472 $\mu\text{g m}^{-3}$, which is rather high for

ambient environments and emphasizes that VOCs are important for fog chemistry during the winter season in Delhi. Five important VOCs were quantified for the first time in the ambient air of Delhi during WIFEX. These are isoprene (a very reactive emission from plants and combustion), acetonitrile (a biomass burning tracer) and the oxygenated VOCs – methanol, acetone, acetaldehyde – which are among the most water-soluble organics present in air, and are important for fog water chemistry^{34,36}. Among the measured VOCs, the concentration of oxygenated VOCs (sum of methanol, acetaldehyde, acetone, methyl vinyl ketone and methyl ethyl ketone) was found to be highest followed by aromatic compounds (benzene, toluene, the sum of C8 and C9 aromatics such as dimethyl and trimethyl benzenes), isoprene and acetonitrile. Benzene has direct health effects on humans due to its carcinogenicity, but in the context of fog is also known to be one of the most efficient secondary organic aerosol precursors present in ambient air. Though hydrophobic when freshly emitted, it can react with hydroxyl

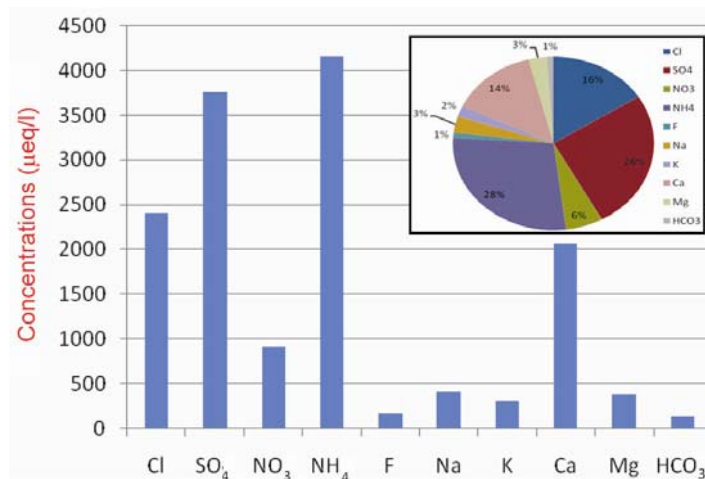


Figure 13. Average concentration of ionic composition of fog water at Delhi for the entire fog episode. (Inset) Percentage contribution of various ionic components in fog water.

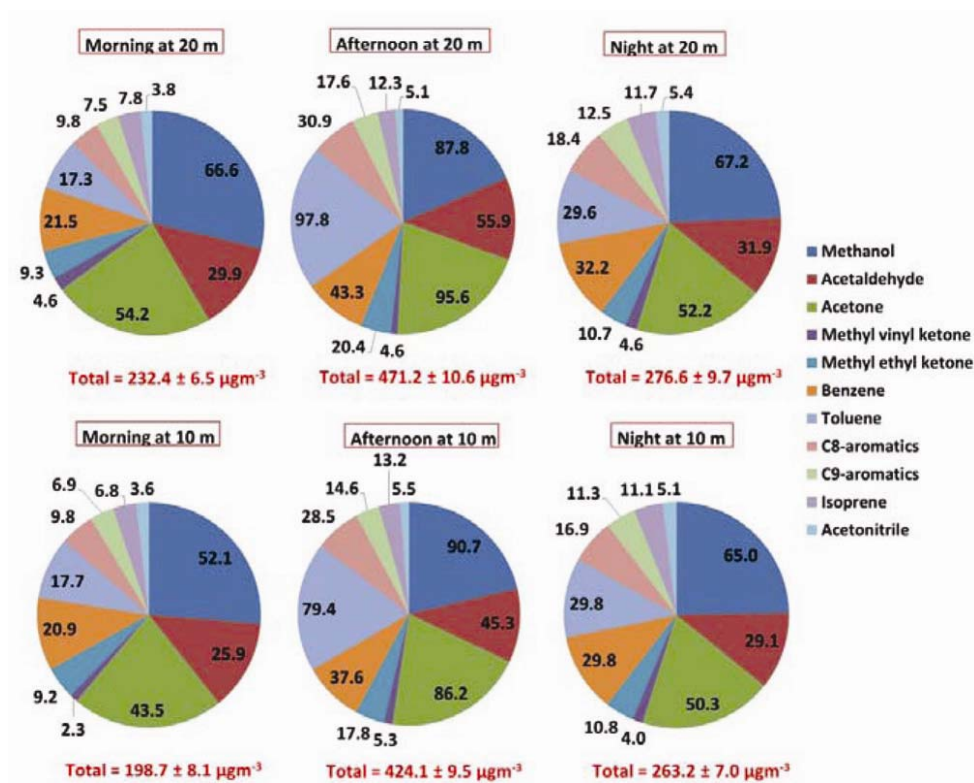


Figure 14. Pie charts summarizing volatile organic compounds (VOC) speciation results for ambient air samples collected at IGI Airport on 19 January 2016 at 20 m (top panel) and 10 m (bottom panel) on the site tower. Total mass concentration given below each pie chart represents the total measured VOC mass concentrations ($\mu\text{g m}^{-3}$) \pm 1 standard deviation (of the analysis).

radicals in the daytime to photochemically form compounds such as phenols/cresols (hydrophilic) on time-scales of a few hours, which can partition to the aerosol phase or coat onto existing aerosol particles thereby altering the water vapour uptake properties of atmospheric aerosol by modifying its chemical composition³⁷. A detailed analysis of VOC measurements made during the study is underway and will be communicated soon.

Conclusion

WIFEX was carried out in the winter season of 2105/16 at IGIA, New Delhi through an initiative taken by MoES, GoI. The main aim of WIFEX was to characterize the fog events occurring in Delhi and monitor simultaneously associated dynamics, thermodynamics, microphysics and chemical composition of the gases, aerosols and fog

water phases to understand factors responsible for their genesis, intensity and duration. This article provides an overview on the instruments, experimental set-up and summarizes the preliminary results on fog physical, chemical and optical properties, fog droplet size distribution, microphysics and dynamics.

A total of eight dense fog events were sampled during January–February 2016 and analysis for one of the dense fog events that occurred on 23 and 24 January is presented together with detailed data. Analysis of data indicates that the formation of deep inversion, a sudden drop in surface temperature, moderate turbulence, well-mixed surface layer and large humidification (saturated conditions) led to formation of a dense fog on the midnight of 23–24 January 2016.

Major notable results from the observations are as follows: The microwave radiometer profiles of temperature and liquid water indicate a mini-convective boundary layer structure, which sustained turbulence at the bottom and top of the fog layer. Initial results from the radiometer observations also indicate high θ_E prior to all fog events; imminent fog could be identified with the help of θ_E at least 2–3 h prior to the event.

Data from the aerosol and fog water chemistry so far indicate a highly polluted environment in which the fog developed; dominance of combustion and vehicular exhaust sources have also been noted in the aerosol samples. Secondary inorganic aerosols (sulphate and nitrate) were the dominant ions (38%) in the chemical constituents of fine particles and were higher during the fog events.

The chemical partitioning of fog water samples suggests that NH_4^+ (28%) and SO_4^{2-} (26%) dominate the chemical composition. pH of fog water indicates its alkaline (6.91) nature and NH_4^+ and Ca^+ were found to be the major neutralizing components.

Mass concentration of gaseous VOCs ranged from 197 to 472 $\mu\text{g m}^{-3}$, which is rather high for ambient environments and emphasizes that VOCs are of great importance in fog chemistry during the winter season. A significant concentration of aromatic VOCs such as benzene was also seen, the photochemical oxidation product of which can alter the water vapour uptake properties of atmospheric aerosols by modifying their chemical composition.

Overall, the detailed observations undertaken and associated model simulation will be used to better understand the winter fog and improve its prediction, by tuning the physical parameterizations and also possibly finding the chains of associations for fog droplet formation. Systematic studies with detailed observations for several fog episodes are necessary to make progress in forecasting these events, their duration and dissipation, etc. It is expected that the data collected during the winter fog field campaign for the next 3–4 years will contribute towards a better understanding of the fog life cycle in different regimes and develop a suitable forecasting system

for airports. Data collected during WIFEX will be of wide interest to the scientific community. These data will be made available for scientific research according to the MoES data policy as follows: (i) Scientists involved in WIFEX have priority in the use of their special data in the first year. Individuals/groups/organizations interested in using the data within this period can get them in collaboration mode. (ii) After one year, data will be freely accessible to all participants/individuals/groups/organizations within the limits of the scientific objectives of the project proposed in collaboration mode.

1. Jaswal, A. K., Kumar, N., Prasad, A. K. and Menas, K., Decline in horizontal surface visibility over India (1961–2008) and its association with meteorological variables. *Nat. Hazards*, 2013, doi:10.1007/s11069-013-0666-2
2. Jenamani, R. K., Alarming rise in fog and pollution causing a fall in maximum temperature over Delhi. *Curr. Sci.*, 2007, **93**, 314–322.
3. Syed, F. S., Kornich, H. and Tjernstrom, M., On the fog variability over South Asia. *Climate Dyn.*, 2012, **39**, 2993–3005.
4. Kulkarni, R. G., Wintertime fog in Delhi and its effect on aviation economy. M Sc Project Report Submitted to Savitribai Phule University, Pune, 2016.
5. Badarinath, K. V. S., Shailesh, K. K., Anu Rani, S. and Roy, P. S., Fog over Indo-Gangetic plains – a study using multisatellite data and ground observations. *IEEE J. Sel. Top. Appl. Earth Obs. Remote Sensing*, 2009, **2**(3), 185–195.
6. Pasricha, P. K., Gera, B. S., Shastri, S., Maini, H. K., Ghosh, A. B., Tiwari, M. K. and Garg, S. C., Role of water vapour green house effect in the forecasting of fog occurrence. *Boundary-Layer Meteorol.*, 2003, **107**(2), 469–482.
7. Dimri, A. P., Niyogi, D., Barros, A. P., Ridley, J., Mohanty, U. C., Yasunari, T. and Sikka, D. R., Western disturbances: a review. *Rev. Geophys.*, 2015, **53**, 225–246; doi:10.1002/2014RG000460
8. Sawaisarje, G. K., Khare, P., Shirke, C. V., Deepakumar, S. and Narkhede, N. M., Study of winter fog over Indian subcontinent: climatoical perspectives. *Mausam*, 2014, **65**(1), 19–28.
9. Kulkarni, P. S., Jain, S. L., Ghude, S. D., Arya, B. C. and Dubey, P. K., On some aspects of tropospheric ozone variability over the Indo-Gangetic (IG) basin, India. *Int. J. Remote Sensing*, 2009, **30**(15–16), 4111–4122.
10. Ghude, S. D., Kulkarni, P. S., Beig, G., Jain, S. L. and Arya, B. C., Global distribution of tropospheric ozone and its precursors: a view from space. *Int. J. Remote Sensing*, 2010, **31**(2), 485–495.
11. Gultepe, I. *et al.*, Fog research: a review of past achievements and future perspectives. *Pure Appl. Geophys.*, 2007, **164**, 1121–1159.
12. Gultepe, I. and Milbrandt, J. A., Probabilistic parameterizations of visibility using observations of rain precipitation rate, relative humidity, and visibility. *J. Appl. Meteorol. Climatol.*, 2010, **39**, 36–46.
13. Steeneveld, G. J., Ronda, R. J. and Holtslag, A. A. M., The challenge of forecasting the onset and development of radiation fog using mesoscale atmospheric models. *Boundary-Layer Meteorol.*, 2015, **154**, 265–289; doi:10.1007/s10546-014-9973-8
14. Xing-Can and Xue-Liang, Impacts of secondary aerosols on a persistent fog event in Northern China. *Atmos. Ocean. Sci. Lett.*, 2012, **5**(5), 401–407.
15. Khemani, L. T., Momin, G. A., Rao, P. S. P., Safai, P. D. and Prakash, P., Influence of alkaline particulates on the chemistry of fog water at Delhi, North India. *Water, Air Soil Pollut.*, 1987, **34**, 183–189.

16. Kapoor, R. K., Tiwari, S., Ali, K. and Singh, G., Chemical analysis of fog water at Delhi, North India. *Atmos. Environ.*, 1993, **27**, 2453–2455.
17. Ali, K., Momin, G. A., Tiwari, S., Safai, P. D., Chate, D. M. and Rao, P. S. P., Fog and precipitation chemistry at Delhi, North India. *Atmos. Environ.*, 2004, **38**, 4215–4222.
18. Bhowmik Roy, S. K., Sud, A. M. and Singh, C., Forecasting fog over Delhi – an objective method. *Mausam*, 2004, **55**(2), 313–322.
19. Singh, C., Unusual long and short spell of fog conditions over Delhi and northern plains of India during December–January 2009–2010. *Mausam*, 2011, **62**(1), 41–50.
20. Singh, J. and Kant, S., Radiation fog over North India during winter from 1989–2004. *Mausam*, 2006, **57**(2), 271–290.
21. Singh, J., Giri, R. K. and Kant, S., Radiation fog viewed by INSAT-1D and Kalpana geostationary satellite. *Mausam*, 2007, **58**(2), 251–260.
22. Suresh, R., Janakiramayya, M. V. and Sukumar, E. R., An account of fog over Chennai. *Mausam*, 2007, **58**(4), 501–512.
23. Jenamani, R. K. and Rathod, L. S., Physical processes from data analysis, real time fog forecast system, performances of various indigenous fog models and benchmarking. Technical Report (FDP-FOG 2008-2015), Meteorological Watch Office, IGI Airport, Delhi, 2015.
24. Chaurasia, S., Sathiyamoorthy, V., Shukla B. P., Simon, B., Joshi, P. C. and Pal, P. K., Night time fog detection using MODIS data over northern India. *Meteorol. Appl.*, 2011, **18**(4), 483–494.
25. Ahmed, R., Dey, S. and Mohan, M., A study to improve night time fog detection in the Indo-Gangetic Basin using satellite data and to investigate the connection to aerosols. *Meteorol. Appl.*, 2014, doi:10.1002/met.1468
26. Goswami, G. and Tyagi, A., Advance forecasting of onset, duration and hourly fog intensity over Delhi. Research Report No. RR CM 0714, CSIR Centre for Mathematical Modelling and Computer Simulation, Bengaluru, India, 2007.
27. Niu, S. J., Zhao, C. S., Lu, L. J. and Yang, J., Analysis of the microphysical structure of heavy fog using a droplet spectrometer: a case study. *Adv. Atmos. Sci.*, 2010, **27**(6), 1259–1275; doi: 10.1007/s00376-010-8192-6
28. Beig, G. *et al.*, Evaluating population exposure to environmental pollutants during Deepavali fireworks displays using air quality measurements of the SAFAR network. *Chemosphere*, 2013, **92**(1), 116–124.
29. Beig, G. *et al.*, Quantifying the effect of air quality control measures during the 2010 Commonwealth Games at Delhi, India. *Atmos. Environ.*, 2013, **80**, 455–463.
30. Noone, K. J. *et al.*, Changes in aerosol size and phase distributions due to physical and chemical processes in fog. *Tellus B*, 1992, **44**, 489–504; doi:10.1034/j.1600-0889.1992.t01-4-00004.x
31. Hammer, E. *et al.*, Investigation of the effective peak supersaturation for liquid-phase clouds at the high-alpine site Jungfraujoch, Switzerland (3580 m amsl). *Atmos. Chem. Phys.*, 2014, **14**, 1123–1139; doi:10.5194/acp-14-1123-2014
32. Varghese, M. *et al.*, Airborne and ground based CCN spectral characteristics: inferences from CAIPEEX-2011. *Atmos. Environ.*, 2016, **125**, 324–336.
33. Narasimha, R., The dynamics of the Ramdas layer. *Curr. Sci.*, 1994, **66**, 16–23.
34. Sinha, V., Kumar, V. and Sarkar, C., Chemical composition of pre-monsoon air in the Indo-Gangetic Plain measured using a new PTR-MS and air quality facility: high surface ozone and strong influence of biomass burning. *Atmos. Chem. Phys.*, 2014, **14**, 5921–5941.
35. Sarkar, C., Kumar, V. and Sinha, V., Massive emissions of carcinogenic benzenoids from paddy residue burning in North India. *Curr. Sci.*, 2013, **104**(12), 1703–1709.
36. Mellouki, A., Wallington, T. J. and Chen, J., Atmospheric chemistry of oxygenated volatile organic compounds: impacts on air quality and climate. *Chem. Rev.*, 2015, **115**, 3984–4014.
37. Volkamer, R. *et al.*, OH-initiated oxidation of benzene. Part I. Phenol formation under atmospheric conditions. *Phys. Chem. Chem. Phys.*, 2002, **4**, 1598–1610.

ACKNOWLEDGEMENTS. We thank the Director, Indian Institute of Tropical Meteorology (IITM), Pune; Director General, India Meteorological Department, New Delhi; Director, Indian Agricultural Research Institute, New Delhi, and Director, Indian Institute of Science Education and Research (IISER) Mohali for their encouragement and support during WIFEX; the Ministry of Earth Sciences, Government of India; (MoES), Savitribai Phule University, Pune, and Balloon Facility, TIFR, Hyderabad for support throughout the campaign and Grandhi Mallikarjuna Rao (G.M.R.) group and Airports Authority of India (AAI) for providing logistic support and cooperation to conduct the experiment inside IGIA, New Delhi; Several of the instruments used for this campaign have been procured under the CAIPEEX program funded by MoES. We also thank IMD for providing satellite images and synoptic charts; MODIS satellite images for public access used in this study; Shri Anand Sharma (IMD), and Dr S. D. Singh, Dr H. Pathak and Dr A. Bhatia (IARI) for their support; Astra Microwave Products Private Limited, Hyderabad for providing the wind profiler system through an MoU with IITM; and Droplet Measurement Technology (DMT, Inc.) and Dr Duncan Axisa (NCAR) for key advice on the cloud droplet probe and timely help. Some of the data analysis was performed using the IGOR (v6.10A) software interactive data analysis tool developed by Dr Vijay P. Kanawade, University of Hyderabad.

Received 16 August 2016; revised accepted 30 September 2016

doi: 10.18520/cs/v112/i04/767-784